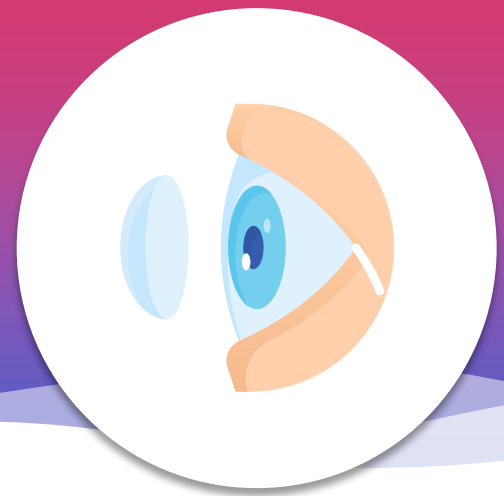


Find the Right Contacts with Our Premium Collection

With the Exclusive Collection of Contact Lenses¹, some plans offer fully covered lenses and contact lens services. Ask your provider³ about the brands⁴ below to find the right fit for you.



Type	Frequency	Brand	Manufacturer
Planned Replacement Includes 2 or 4 boxes ² , depending on your plan and your provider's recommendations.	Monthly	Ultra®	Bausch + Lomb®
	Monthly	Ultra® for Astigmatism	Bausch + Lomb®
	Monthly	Biofinity®	CooperVision®
	Monthly	Biofinity® Toric	CooperVision®
	Monthly	Acuvue® Vita ®	Johnson & Johnson
	Monthly	Acuvue® Vita ® for Astigmatism	Johnson & Johnson
Type	Frequency	Brand	Manufacturer
Disposable Includes up to 8 boxes, depending on your plan and your provider's recommendations.	Daily	Biotrue® 1-Day	Bausch + Lomb®
	Daily	Biotrue® 1- Day for Astigmatism	Bausch + Lomb®
	Daily	Clariti® 1-Day	CooperVision®
	Daily	Acuvue® 1-Day Moist®	Johnson & Johnson
	Daily	Acuvue® 1-Day Moist® Astigmatism	Johnson & Johnson
	Daily	Acuvue® 1-Day Moist® Multifocal	Johnson & Johnson
	Daily	Acuvue® Oasys 1-Day with Hydraluxe™ Technology for Astigmatism	Johnson & Johnson
	2 weeks	Acuvue® 2	Johnson & Johnson
	2 weeks	Acuvue® Oasys	Johnson & Johnson
	2 weeks	Acuvue® Oasys® for Astigmatism	Johnson & Johnson
	2 weeks	Acuvue® Oasys® Multifocal®	Johnson & Johnson

Looking for Our Collection?

See what your plan covers by visiting davisvision.com, then call your provider to place your order.

1. The contact lenses listed here are part of the Davis Vision formulary of products, which is subject to change.

2. Number of contact lens boxes may vary based on manufacturer's packaging

3. For a list of participating providers, use the Find a Vision Provider tool at metlife.com. Select Find a Vision Provider, choose Davis Vision as the network, complete the information requested and hit the Search button.

4. All product and company names are trademarks or registered trademarks of their respective holders. Use of them does not imply any affiliation with or endorsement by them.

Vision benefits are underwritten by Metropolitan Life Insurance Company, New York, NY. Certain claims and network administration services are provided through: Davis Vision, Inc. ("Davis Vision"), a New York corporation; or Superior Vision Services, Inc. ("Superior Vision"), a Delaware corporation. Davis Vision and Superior Vision are part of the MetLife family of companies. Like most group benefit programs, benefit programs offered by MetLife and its affiliates contain certain exclusions, exceptions, reductions, limitations, waiting periods and terms for keeping them in force. Please contact MetLife or your plan administrator for costs and complete details

Coverage is underwritten by National Guardian Life Insurance Company. The coverage or service requested may not be available in all states and is subject to individual state approval.